

2001



< >

I. \_\_\_\_\_

II.

1. \_\_\_\_\_

2. \_\_\_\_\_

3. \_\_\_\_\_

4. \_\_\_\_\_ R & D \_\_\_\_\_

5. \_\_\_\_\_

6. \_\_\_\_\_

7. \_\_\_\_\_

8. \_\_\_\_\_

9. \_\_\_\_\_

10. \_\_\_\_\_

I.

1.

2.

1999 「

5

3.

- 1) : 2000 12 31
- 2) : 2000 1 1 ~ 2000 12 31
- 3) : 2001 4 4 ~ 2001 6 10

4.

- 1) :
- 2) :

5.

(KSIC)

6.

1)

(4 ), (11 ) (Proportional Quota)

: (4 )

- : , ,
- : , , ,
- : , , , ,
- : , ,

- : ( )
- : , , , ( )  
: , , ,  
, , , , ( )

2)

1 : , (Proportionate Quota Allocation Stage)

2 : (Random Sampling Stage)

## 7.

1)

, , , ,

2)

, .

3)

2001 6 ( )  
가 ( : 가, , , + , )  
, , 2

4)

, 가 .

5)

: (KS)  
: ISO-9000( ), UL( ), CE( ), QS-9000( ),  
FDA( ), TUV( ), JIS( )

6)

7)

8)

9)

2000 , 2 ,  
( )

10)

:  
:  
:  
: 가

11)

가 .

12)

8.

가

9.

□

2,000                      50                      (                      300                      35 )                      가

< 1 >

( : )

	<b>2,000</b>	<b>790</b>	<b>286</b>	<b>621</b>	<b>303</b>
1- 4	933	427	126	307	73
5- 9	676	235	99	196	146
10- 19	273	89	44	80	60
20- 49	97	31	14	31	21
50- 99	12	3	2	5	2
100- 299	8	4	1	2	1
300	1	1	-	-	-
	<b>238</b>	<b>94</b>	<b>41</b>	<b>62</b>	<b>41</b>
1- 4	64	28	15	12	9
5- 9	76	28	11	20	17
10- 19	56	20	10	18	8
20- 49	35	13	5	11	6
50- 99	3	3	-	-	-
100- 299	4	2	-	1	1
300	-	-	-	-	-
	<b>305</b>	<b>140</b>	<b>56</b>	<b>78</b>	<b>31</b>
1- 4	190	97	29	54	10
5- 9	59	21	14	12	12
10- 19	28	14	6	6	2
20- 49	21	6	5	4	6
50- 99	4	-	1	2	1
100- 299	3	2	1	-	-
300	-	-	-	-	-
	<b>422</b>	<b>164</b>	<b>59</b>	<b>141</b>	<b>58</b>
1- 4	239	100	34	86	19
5- 9	145	51	21	45	28
10- 19	31	13	3	8	7
20- 49	7	-	1	2	4
50- 99	-	-	-	-	-
100- 299	-	-	-	-	-
300	-	-	-	-	-
	<b>1,035</b>	<b>392</b>	<b>130</b>	<b>340</b>	<b>173</b>
1- 4	440	202	48	155	35
5- 9	396	135	53	119	89
10- 19	158	42	25	48	43
20- 49	34	12	3	14	5
50- 99	5	-	1	3	1
100- 299	1	-	-	1	-
300	1	1	-	-	-

< >

가.

$$= \text{—————} \times 100$$

$$= \text{—————} \times 100$$

$$= \text{—————} \times 100$$

$$= \text{—————}$$

$$1 = \text{—————}$$

## II.

### 1.

●

□ 「 1999 」 962,418 ,  
2,090,616 .

□ (2,777,986 ) 34.6% ,  
(12,920,289 ) 16.2% .

< 2 >

2,777,986	962,418	34.6%	12,920,289	2,090,616	16.2%

: 「 1999 」 ,

●

□ (386,530 ) 40.2% 가 ,  
(305,365 ) 31.7%, (230,394 ) 23.9% .

□ (37,042 ) 3.8%, (2,931 ) 0.3%

□ 64.3% 가 ,  
33.6%, 25.6%, 12.5%, 4.5% .

< 3 >

	(A)	(B)	(B / )	(B / A )
	2,777,986	962,418	100.0	34.6
	5,144	156	0.0	3.0
	297,416	37,042	3.8	12.5
	64,777	2,931	0.3	4.5
	909,205	305,365	31.7	33.6
	601,117	386,530	40.2	64.3
	900,327	230,394	23.9	25.6

: 「 1999 」 ,



●

□ (191,051 ) 19.9% 가  
, (150,405 ) 15.6%

□ (44.3%) (43.3%)가 가 ,  
(28.7%)

< 4 >

	(A)	(B)	(B / )	(B / A)
	<b>2,777,986</b>	<b>962,418</b>	<b>100.0</b>	<b>34.6</b>
	665,518	191,051	19.9	28.7
	247,375	91,799	9.5	37.1
	165,609	54,342	5.6	32.8
	131,540	46,684	4.9	35.5
	80,909	30,219	3.1	37.3
	81,825	30,781	3.2	37.6
	53,323	23,626	2.5	44.3
	438,228	150,405	15.6	34.3
	101,797	41,855	4.3	41.1
	86,806	31,892	3.3	36.7
	109,752	36,755	3.8	33.5
	112,933	40,574	4.2	35.9
	121,390	44,455	4.6	36.6
	162,714	61,567	6.4	37.8
	183,360	71,302	7.4	38.9
	34,907	15,111	1.6	43.3

: 「1999」,

●

□ 5 (918,616 )  
95.4%

- 5 9 3.5%, 10 19 0.7%, 20 49  
0.3%

□ 5 37.4% (34.6%)

- 5 9 17.2% (34.6%)  
, 10 19 9.6%, 20 49 6.8%  
가

< 5 >

( : , % )

	(A)	(B)	(B / )	(B / A)
	<b>2,777,986</b>	<b>962,418</b>	<b>100.0</b>	34.6
1 - 4	2,454,000	918,616	95.4	37.4
5 - 9	195,882	33,628	3.5	17.2
10 - 19	70,896	6,831	0.7	9.6
20 - 49	38,564	2,629	0.3	6.8
50 - 99	10,623	486	0.1	4.6
100 - 299	6,323	204	0.0	3.2
300	1,698	24	0.0	1.4

: 「 1999

」 ,

●

□

96.8%, 2.0%

□

87.8%, 12.2% 2.0%

-

5 91.9%, 8.1% , 5  
70.3%, 29.7% , 가

□

97.2%, 1.6% 가

-

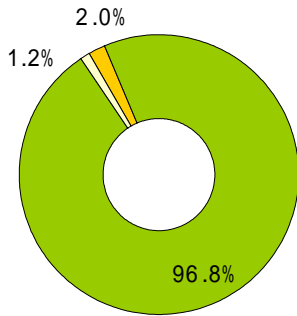
5 97.7%, 1.2%

- 5  
가

87.0%, 8.4%

< 1 >

< 6 >



( : % )

	950,506	2.0	96.8	1.2
	39,968	12.2	87.8	-
5	32,399	8.1	91.9	-
5	7,569	29.7	70.3	-
	910,538	1.6	97.2	1.2
5	868,213	1.2	97.7	1.0
5	42,325	8.4	87.0	4.6

●

□

1990 89.8% ,  
2000 27.7%

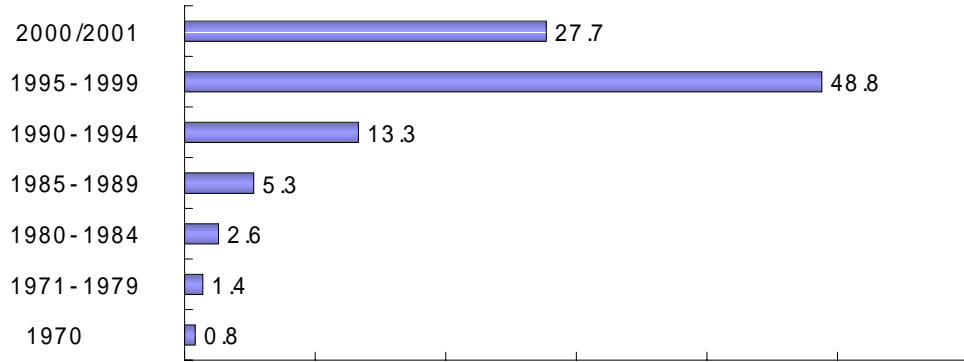
□

가 1990

1997

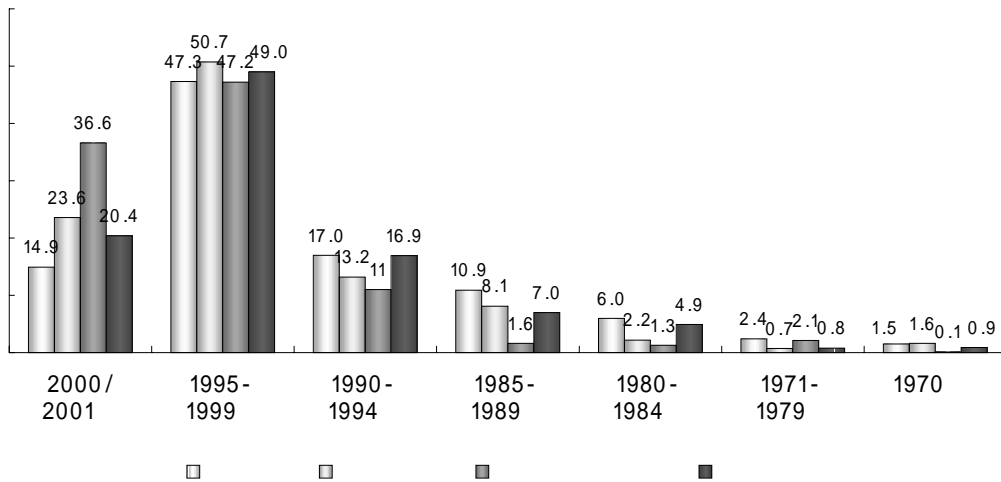
< 2 >

( : %)



< 3 >

( : %)



●

( )

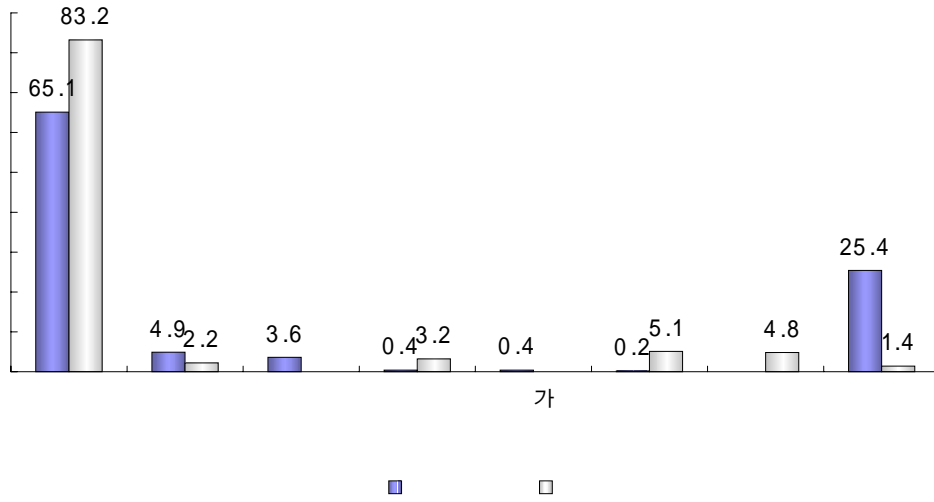
□

가 65.1%, 83.2% 가

< 4>

( )

( :%)



● ( ) ( )

□ (53.8%) 가 (45.1%) .

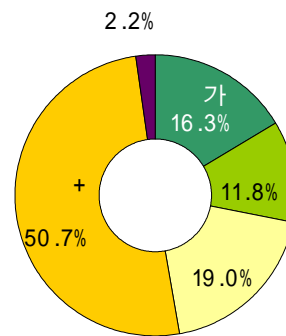
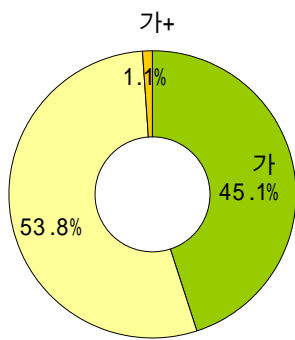
□ 가 16.3% , 81.6%

< 5>

( )

< 6>

( )



● ( )

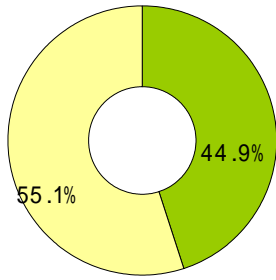
□ 44.9%,

55.1% ,

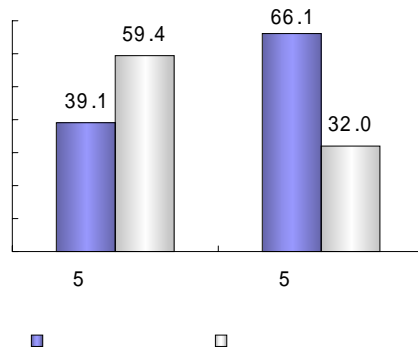
□ 5 39.1% , 5

66.1% .

< 7> ( )



< 8> ( )

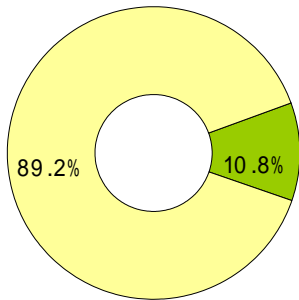


( )

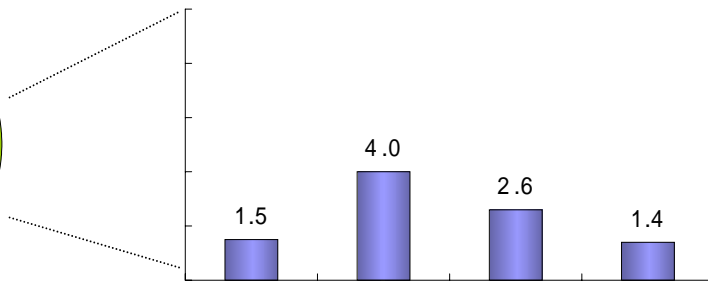
□

2.6 , 1.4 , 10.8% , 1.5 , 4 , .

< 9> ( )



< 10> ( )  
( : )



( )

□

7.7%

KT 1 , GQ 1 , Q 1 , 100PPM 1

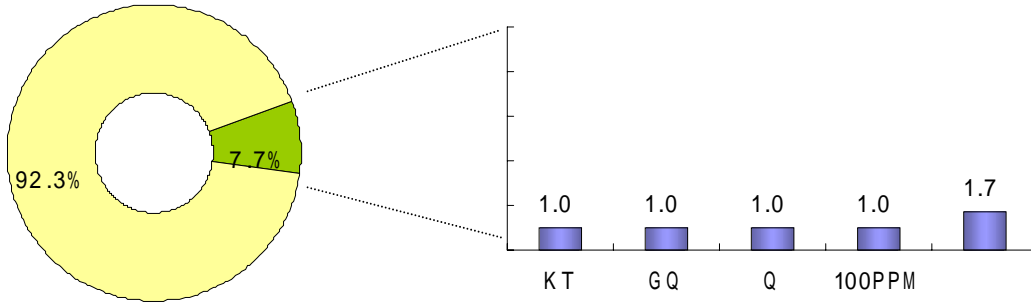
< 11>

( )

< 12>

( )

( : )



( )

□

4.8%

2.3 ,

1.1

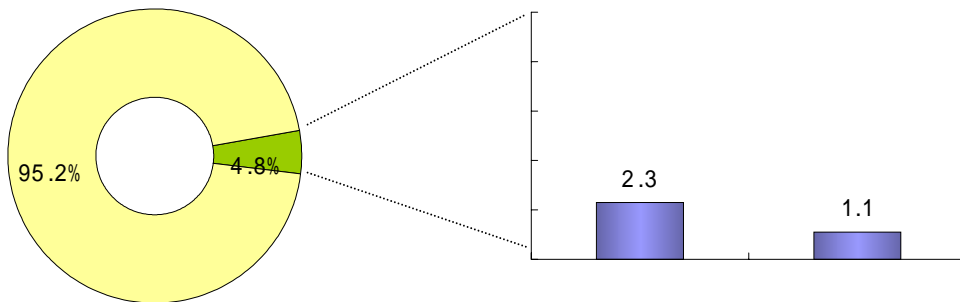
< 13>

( )

< 14>

( )

( : )



2. \_\_\_\_\_

●

1 4,290 , 2 9,636 ,  
1 3,537 2 .

8,541 , 1 1,620 ,  
8,378 1.39 .

3,160 , 8,661  
2,805 3.09 .

●

1 3,965 , 3 4 112  
1 2,950 , 2.63 .

2,456 , 3,291 2,415  
1.36 .

< 7 >

( : , )

	<b>14,290</b>	<b>8,541</b>	<b>7,222</b>	<b>3,106</b>	<b>13,965</b>	<b>345</b>	<b>2,456</b>
	29,636	11,620	11,582	8,661	34,112	4,342	3,291
5	13,130	6,639	6,308	2,494	13,829	18	2,137
5	95,441	31,511	33,083	34,009	112,064	22,834	7,510
	13,537	8,378	7,001	2,805	12,950	119	2,415
5	12,440	7,842	6,493	2,551	11,988	35	2,293
5	36,491	19,504	17,456	7,737	32,746	1,724	4,882

●

( / X 100) 34.0% ,  
( / X 100) 17.6% .



□ 28.4%, 9.6% ,  
34.5%, 18.6% .

●

□ ( / X 100) 43.0% ,  
74.8%, 40.1% .

●

□ 1.9 , 2.9 , 1.8  
.

●

□ 1 3,373 , 3,888 ,  
3,352 1 .

< 8 >

( :%, , )

					1
	<b>34.0</b>	<b>17.6</b>	<b>43.0</b>	<b>1.9</b>	<b>3,373</b>
	28.4	9.6	74.8	2.9	3,888
5	33.9	15.5	39.5	2.2	3,534
5	22.7	6.7	102.8*	3.4	5,481
	34.5	18.6	40.1	1.8	3,352
5	35.3	19.1	39.3	1.8	3,357
5	28.0	14.9	44.3	1.9	3,230

\* 5 : 120.3%

□ 가

□ 가 52.4% 29.6%,  
18% .

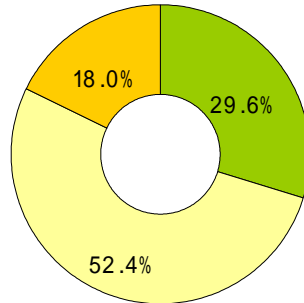
□ 45.8%, 31.5%, 22.6% ,  
52.7%, 29.6%, 17.7%  
가 .

□ 5

(40.6%)

(41.1%)

< 15> 가



< 9> 가

( : %)

	<b>950,506</b>	<b>29.7</b>	<b>52.4</b>	<b>17.9</b>	-
	39,968	31.5	45.8	22.6	0.1
5	32,399	29.7	45.3	25.0	-
5	7,569	39.6	47.8	12.1	0.5
	605,364	29.6	52.7	17.7	-
5	386,501	29.0	53.3	17.7	-
5	218,673	41.1	40.6	17.9	0.4

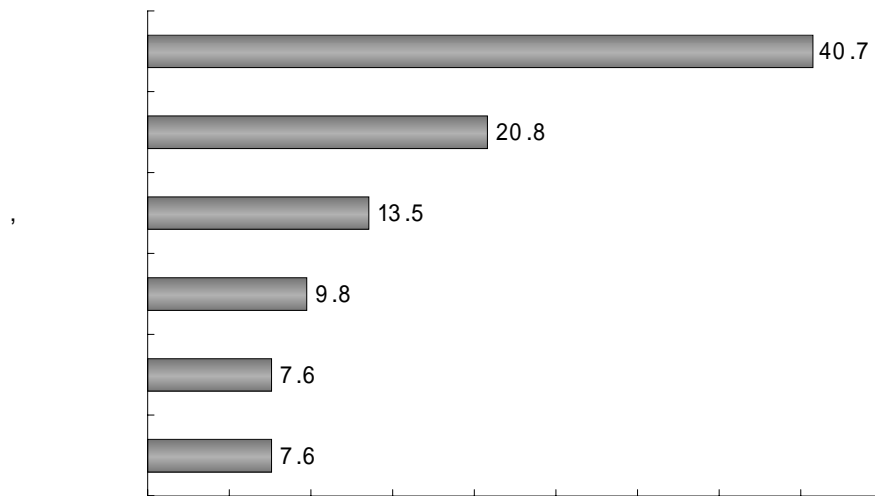
●

□ 2000  
(40.7%)가 가 가 .

□ (20.8%), (13.5%),  
(9.8%) .

< 16 >

( : %)



< 10 >

( : %)

	<b>950,506</b>	<b>9.8</b>	<b>13.5</b>	<b>7.6</b>	<b>40.7</b>	<b>20.8</b>	<b>7.6</b>
	39,968	16.6	13.6	12.3	40.7	15.1	1.7
	305,364	12.1	7.1	13.3	45.3	16.4	5.7
	368,501	9.3	18.6	4.0	42.2	17.1	8.7
	218,673	6.4	13.4	5.3	32.1	34.5	8.2

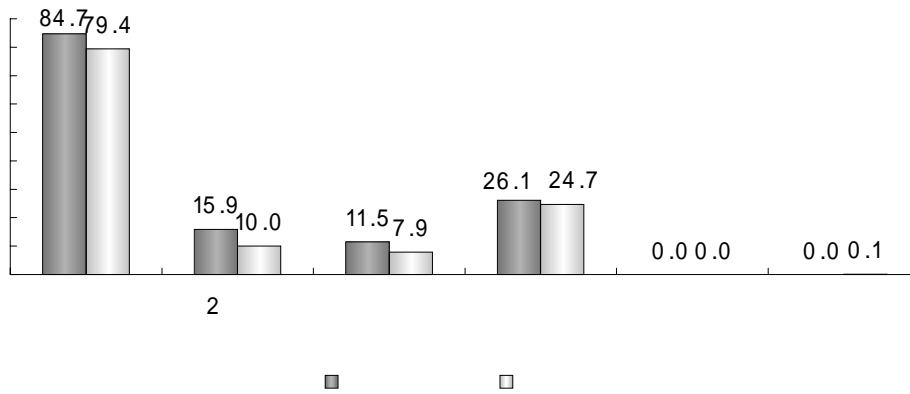
● (2000 )

□ 가 24.7%, 8.1% . 79.7%, 2 10.3%,

□ 84.7% , 2  
15.9%, 26.1% .  
79.4%, 2 10.0% 24.7% .

□ 5 20.7% 가 , 2  
5 18.2% 가 .

< 17> ( )  
( :%)



< 11> ( )  
( :%)

			2				
	<b>950,506</b>	<b>79.7</b>	<b>10.3</b>	<b>8.1</b>	<b>24.7</b>	<b>0.0</b>	<b>0.1</b>
	39,968	84.7	15.9	11.5	26.1	-	-
5	32,399	84.1	18.2	9.1	27.3	-	-
5	7,569	86.8	7.5	20.7	21.8	-	-
	910,538	79.4	10.0	7.9	24.7	-	0.1
5	868,213	79.2	10.0	7.8	25.1	-	0.1
5	42,325	82.3	10.6	8.5	17.1	0.4	0.3

●

□

16.2%

28.7%

□

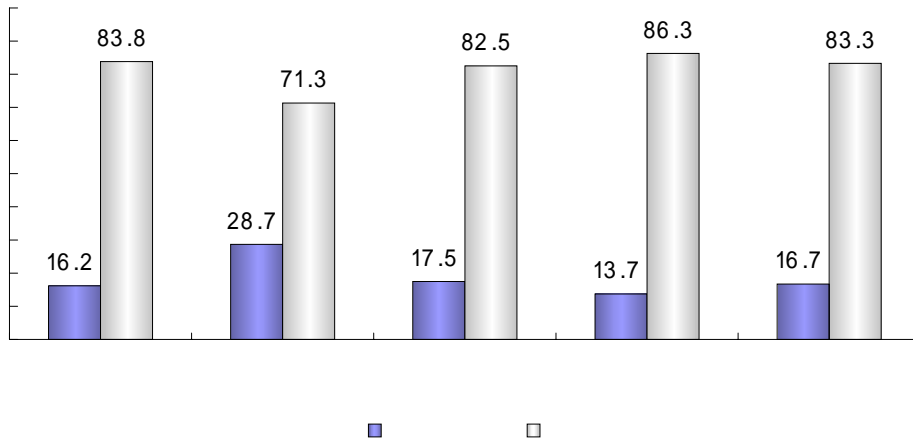
가 가 (32.7%)

, (28.3%),

(16.0%)

< 18 >

( : %)



< 12 >

- ( )

( : %)

							가	
	154,248	12.4	28.3	4.8	16.0	9.7	32.7	9.3
	11,489	15.6	27.5	5.9	21.5	3.7	38.1	5.5
	53,468	9.4	18.8	6.1	17.8	15.1	33.5	11.8
	52,824	6.1	36.4	2.9	12.3	9.0	30.3	9.1
	36,467	24.7	30.5	5.4	17.2	4.6	33.3	6.6

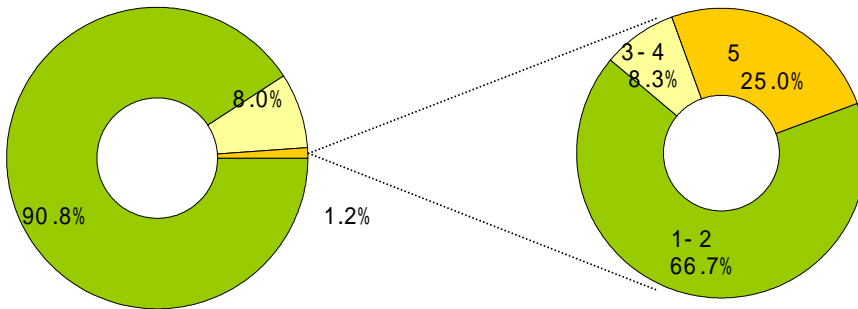
□

□ 1999 2 9.2%가 1 90.8%

□ 25.2% 4.6%

< 19>

< 20>



< 13> 2

( :%)

						1-2	3-4	5
	950,506	1.2	90.8	8.0	11,406	66.7	8.3	25.0
	39,968	4.6	70.2	25.2	1,839	57.8	40.0	2.2
	305,364	2.2	91.4	6.4	6,718	54.5	0.0	45.5
	386,501	0.4	91.4	8.1	1,546	100.0	0.0	0.0
	218,673	0.7	92.6	6.7	1,531	100.0	0.0	0.0

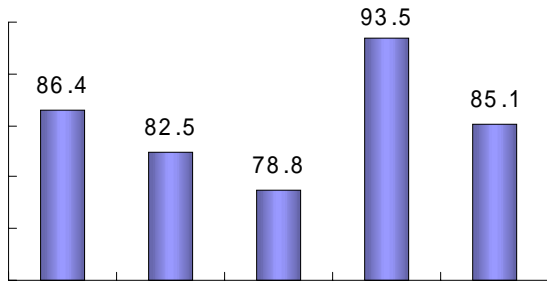
● .

□ 86.4% , 93.5% 가 .

□ 69.6%가 90% . , 60-90% 14.8% .

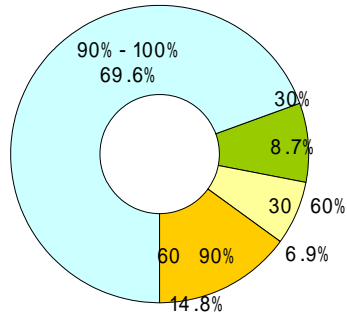
< 21>

( :%)



< 22>

( )



●

□

11.2%, 가 2.2%

가 86.6%, 가

□

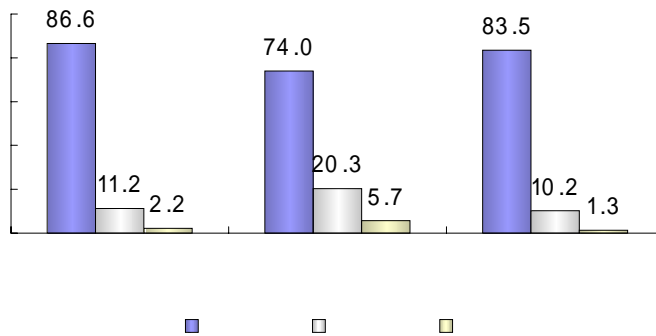
20.3%

가 83.5%,

74.0%  
가 10.2%

< 23>

( :%)



□

59

□

28.6% 60 89 가 38.4% 가 , 90

□

22

79

57

< 14 >

( : %)

		30	30 59	60 89	90	( )
	35,880	10.3	22.7	38.4	28.6	59
	3,913	0.9	22.7	13.9	62.5	79
5	1,519	0.0	33.3	0.0	66.7	77
5	3,569	1.3	20.5	14.9	.	80
	31,967	11.5	22.7	41.4	24.5	57
5	30,387	11.9	22.2	42.9	23.0	57
5	1,580	4.7	30.7	14.5	50.1	67

●

( )

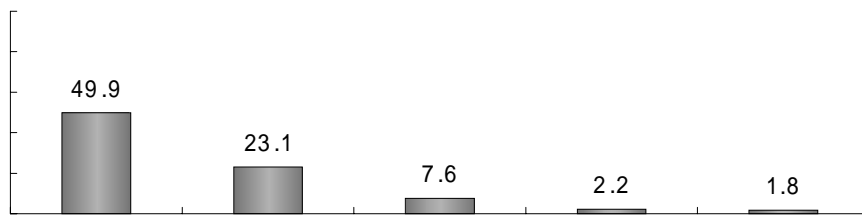
□

23.1% , 가 7.6%, 49.9% 가 , 2.2% .

< 24 >

( )

( :%)



●

□

6.1%,

1.7%

92.7% ,

□

14.7%,

15.0% ,

70.4%,



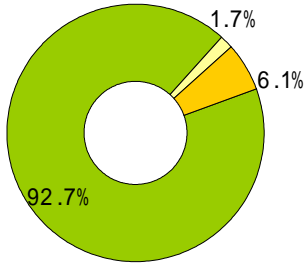
□

88.5%,

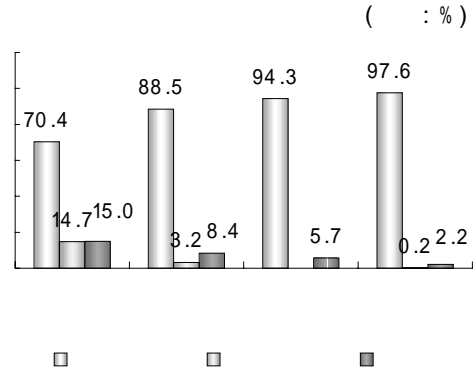
94.3%,

97.6%

< 25>



< 26>



●

□

67

59

8

□

90

37.9% 가

, 60 - 89

29.9%

□

82

62

20

□

5

78 , 5

88

10

□

5

62 , 5

73

11

< 15>

( : %)

		30	30 59	60 89	90	( )
	43,031	10.1	22.2	29.9	37.9	67
	10,503	11.0	15.8	11.3	61.8	82
5	6,581	15.4	15.4	7.7	61.5	78
5	3,992	1.8	28.1	26.5	43.6	88
	32,528	9.7	24.2	35.9	30.1	62
5	30,472	10.3	23.5	37.5	28.7	62
5	2,056	2.3	35.2	11.4	51.0	73

●

( )

□

5.2%,

94.8%

□

5

1.7%

, 5

20.2%가

□

36.6% 가

,

20.7%,

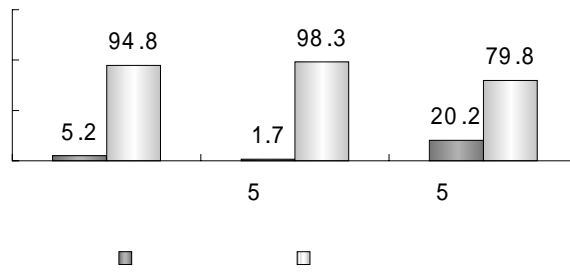
가 16.1%,

15.8%

< 27 >

( )

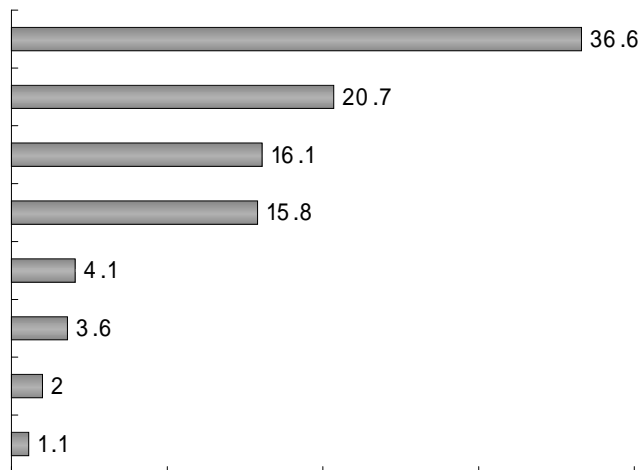
( :%)



< 28 >

( )

( :%)



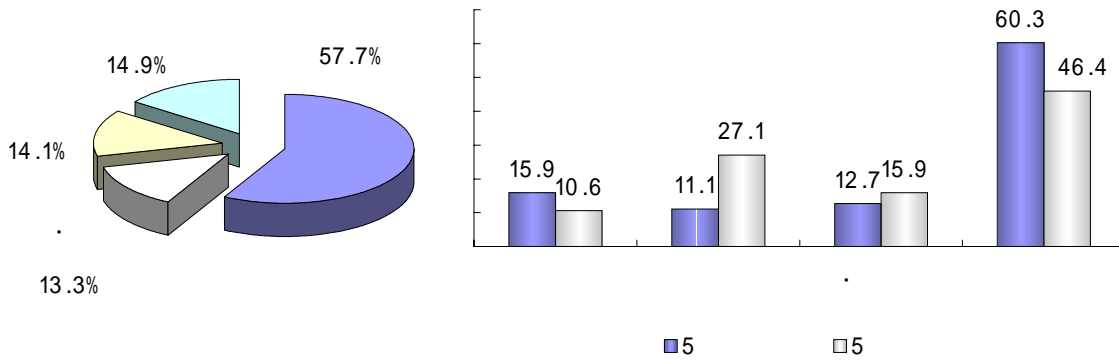
● . ( )

□ ( ) 14.9%,  
14.1%, 가 13.3% , 가  
57.7% .

□ 5 60.3% , 15.9% 가 11.1%  
가 12.7% .

□ 5 10.6%, 27.1% , . 15.9%  
46.4% .

< 29> . ( ) < 30> . ( )  
( : %)



□ ( )

□ 1 70.8%, 2 22.0% , 3  
7.2% .

□ 1 5 73.3% , 5 64.2% , 2  
5 20%, 5 27.1% .

< 16> ( )  
( : %)

		1	2	3	4	5
	10,487	70.8	22.0	6.7	-	0.5
5	7,594	73.3	20.0	6.7	-	0.0
5	2,894	64.2	27.1	6.8	-	1.9

□ ( )

□ 2-5 52.0% 가 . 1  
 29.1%, 6-10 10.7%, 11  
 8.2% .

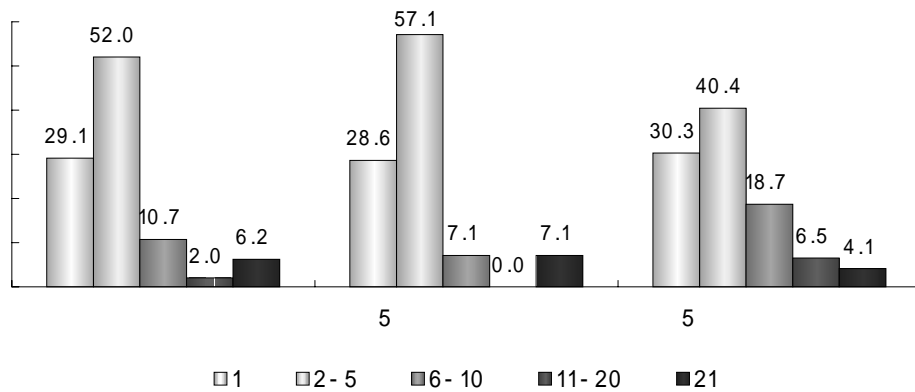
□ 5 1 28.6%, 2-5  
 57.1%, 6-10 7.1%, 10  
 7.1% .

□ 5 1 30.3%, 2-5  
 40.4%, 6-10 18.7%, 10  
 10.6% .

< 31>

( )

( :%)



□ ( )

□ 2000 (26.7%)  
 (25.7%) 가 가 , (14.9%),  
 (14.7%), (14.4%) .

□ 5 (26.7%) 가 가 , 5  
 (39.2%)가 가 .

< 17>

( , )

( :%)

5	10,775	26.7	5.3	14.9	25.7	14.4	14.7	5.8	0.9
5	7,594	26.7	6.7	20.0	20.0	13.3	20.0	6.7	-
5	3,182	26.8	2.1	2.8	39.2	16.8	2.2	3.8	3.3

- ( )
- 45.6%가 2-5 , 1  
26.9%, 6-10 17.9%, 11 9.1% .
- 6.3 , 5 5.4 , 5 10.6 5  
가 2 .

< 18> ( )

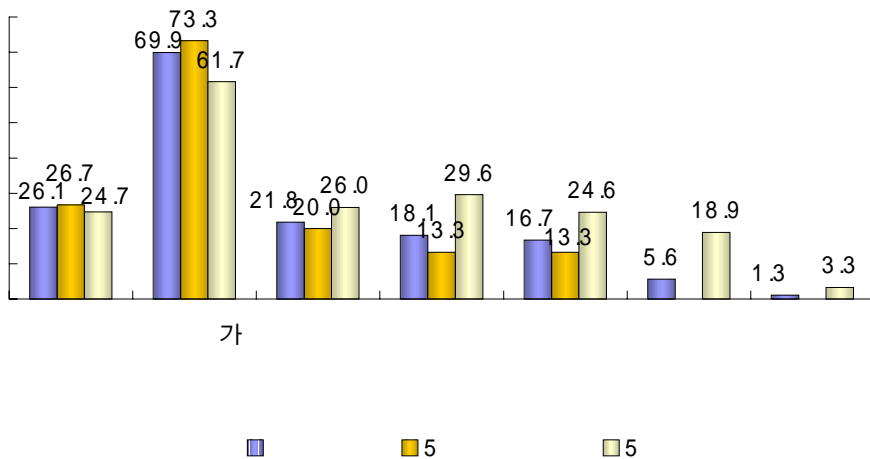
( : , %)

		1	2-5	6-10	11-20	21	
	12,987	26.9	45.6	17.9	9.1	0.6	6.3
5	10,631	28.6	42.9	19.0	9.5	-	5.4
5	2,356	19.1	57.8	12.6	7.1	3.5	10.6

- ( )
- ‘ 가 ’ 가  
(69.9%), (26.1%), (21.8%)
- 5 가 (73.3%) (26.7%)가 가
- 5 가 (61.7%) (29.6%),  
(26.0%), (24.7%), (24.6%)  
18.9%

< 32> ( )

( : %)



3. \_\_\_\_\_

가 3 . 3.5 , 24.6%, 75.4%

. ( , , , )

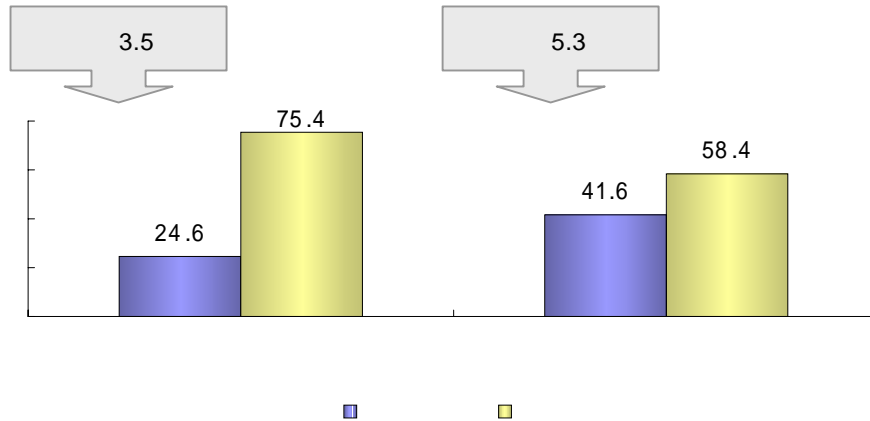
●

5.3 3.5 1.5 .

가 58.4%, 가 41.6%

< 33 >

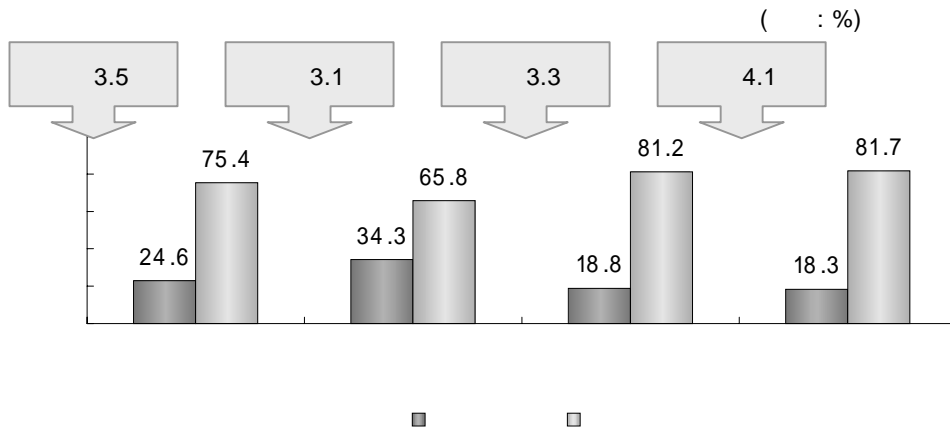
( : %)



, 3.1 . 4.1 가 , 3.3

65.8% . 81.7% 가 ,

< 34 >



가 , 0.5 , 0.5 , 0.4 .

1.9

) . 2.9 가 , (1.5

< 19 >

( : )

	<b>950,506</b>	<b>0.5</b>	<b>0.5</b>	<b>0.4</b>	<b>0.0</b>	<b>1.9</b>
	39,968	0.8	2.9	0.9	0.2	0.5
	305,364	0.3	0.1	0.2	-	2.3
	386,501	-	0.6	0.2	-	2.3
	218,673	1.5	0.4	0.8	0.1	0.9

4. R & D ( )

● ( )

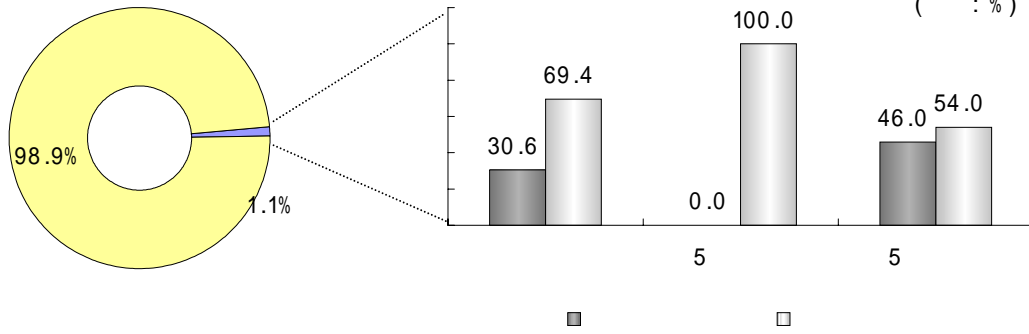
1.1% ,

5 46% .

< 35>

( ) < 36>

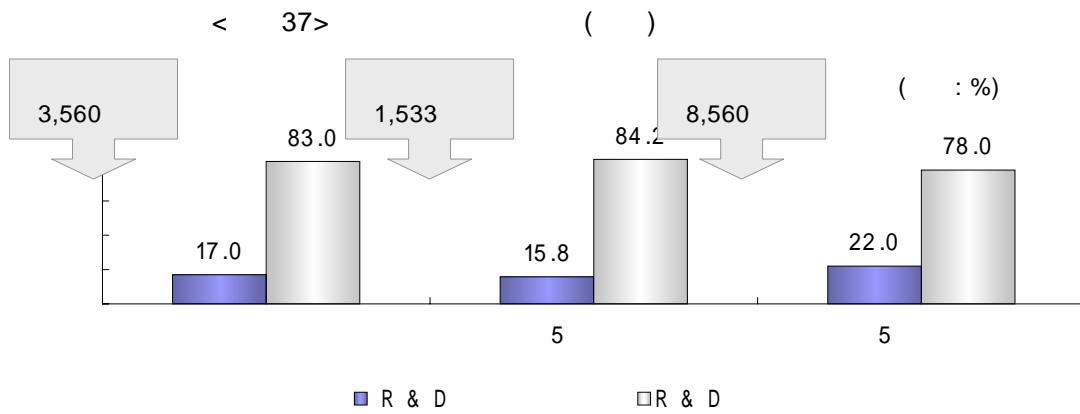
( )



● ( )

□ 2000 17.0% , 3,560

□ 5 8,560 5 (1,533 )  
5.5





5. \_\_\_\_\_

● PC

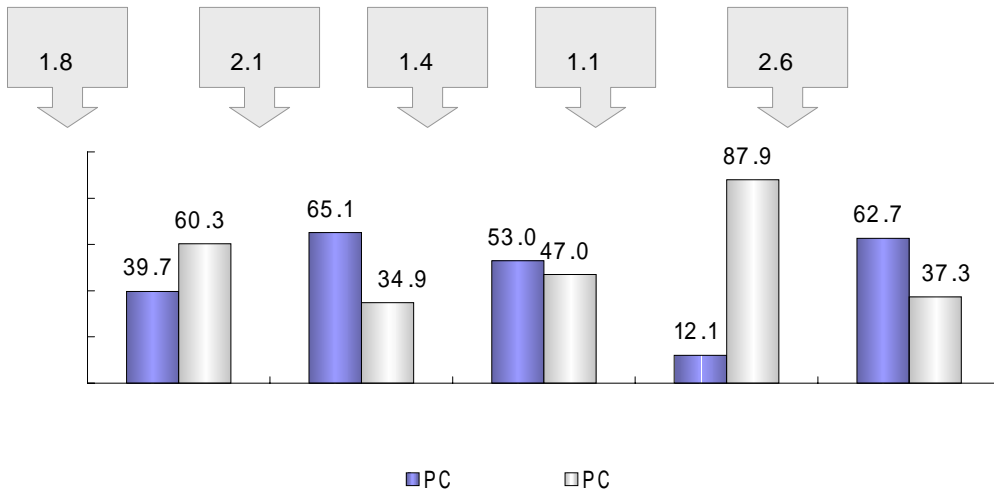
□ PC 39.7% PC

□ PC 74.8% PC 1  
2 25.2%

□ PC 1.8 , PC 가 2.6  
가 , 2.1 , 1.4 .

< 38 > PC

( : %)



< 20 > PC

( : %)

		1	2	3	4	5-9	10-49	50
	<b>351,081</b>	<b>74.8</b>	<b>13.3</b>	<b>6.6</b>	<b>1.6</b>	<b>1.8</b>	<b>1.8</b>	<b>0.1</b>
	26,014	56.5	17.2	9.8	9.1	6.3	1.0	0.1
5	20,249	60.0	17.5	10.0	10.0	2.5	-	-
5	5,765	44.1	16.2	9.1	6.1	19.7	4.5	0.3
	325,067	76.3	13.0	6.3	1.0	1.4	1.9	0.1
5	300,902	78.5	12.6	5.8	0.8	0.8	1.5	-
5	24,165	49.0	17.9	12.2	4.0	9.6	6.6	0.7

●

□

61.4% 가 ,

27.4%

□

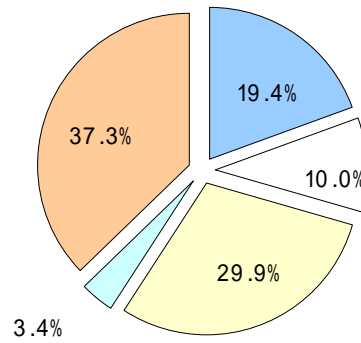
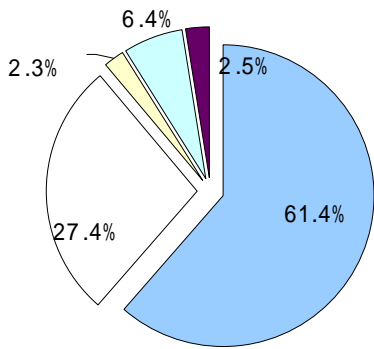
37.3%

29.9%

19.4%

< 39>

< 40>



< 21>

( : % )

	<b>950,506</b>	<b>64.7</b>	<b>28.9</b>	<b>2.4</b>	<b>6.7</b>	<b>2.6</b>
	39,968	38.1	52.9	7.2	21.9	3.7
5	32,399	40.6	50.0	6.3	21.9	3.1
5	7,569	27.3	65.3	11.1	21.8	6.0
	910,538	65.9	27.8	2.2	6.0	2.6
5	868,213	66.9	26.9	2.0	5.6	2.6
5	42,325	45.5	47.1	6.2	16.2	1.9

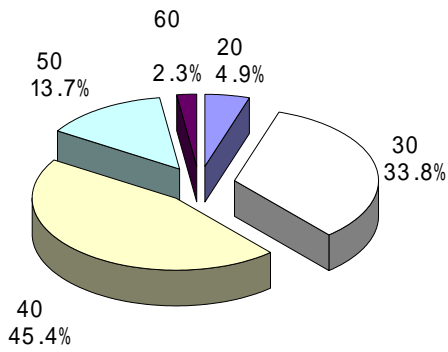
6. \_\_\_\_\_

, 40 가 45.4% 가 , 30 33.8% .

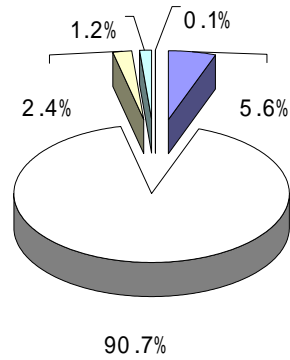
90.7%가 .

가 61.6% 가 , 4  
22.9% .

< 41 >

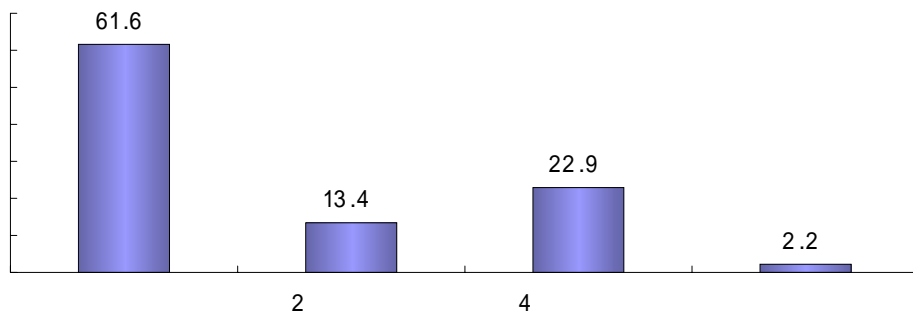


< 42 >



< 43 >

( : %)



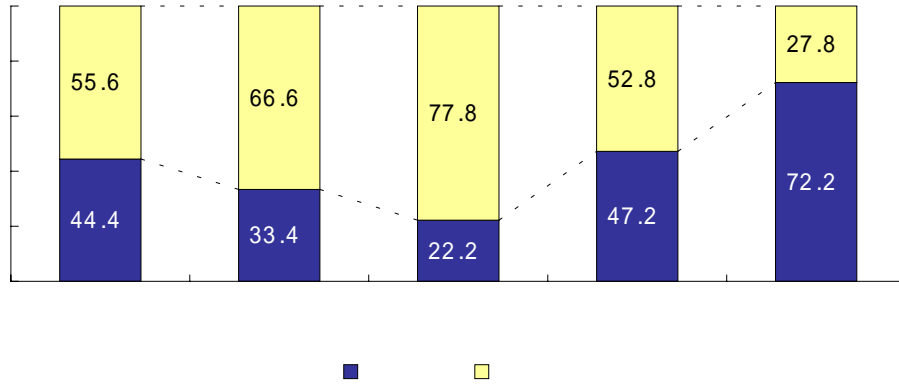
● 가

44.4%가 , , 가 .

□ 가 72.2% 가 ,  
 22.2% 가 .

< 44 > 가

( : %)



□ 가 1-2 가 48.6% 가 .

□ 가 4 ,  
 5.3 가 .

< 22 > 가

( : % , )

		1-2	3-5	6-9	10	
	<b>401,945</b>	<b>48.6</b>	<b>32.6</b>	<b>7.6</b>	<b>11.2</b>	<b>3.9</b>
	12,133	64.5	19.7	13.6	2.2	2.8
	66,279	35.7	37.1	12.3	14.9	4.8
	172,781	67.4	28.5	1.3	2.8	2.3
	150,752	31.5	36.5	12.1	19.9	5.3

●

□

88.4%가

□

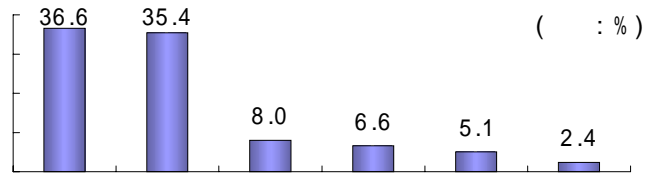
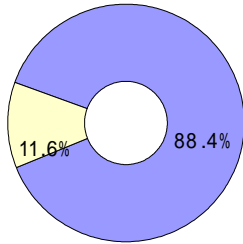
(35.4%)

(36.6%)

< 45 >

< 46 >

( )



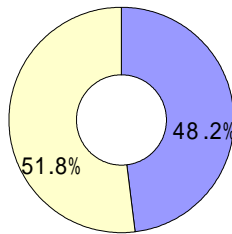
●

□

48.2%가  
(54%) (41.8%)

< 47 >

( : %)



< 23 >

( )

( : %)

	<b>456,752</b>	<b>54.0</b>	<b>41.8</b>	<b>29.4</b>	<b>23.5</b>	<b>18.0</b>	<b>9.3</b>	<b>8.2</b>	<b>7.7</b>	<b>13.8</b>
	16,910	48.4	44.5	41.5	30.9	39.5	9.9	9.0	7.6	16.1
	131,425	48.6	55.3	20.2	23.3	21.2	8.7	12.4	10.9	5.1
	173,195	54.9	37.4	41.8	15.1	16.2	13.0	5.6	8.2	15.0
	135,221	58.7	33.8	20.9	33.3	14.5	5.2	7.4	3.8	20.7

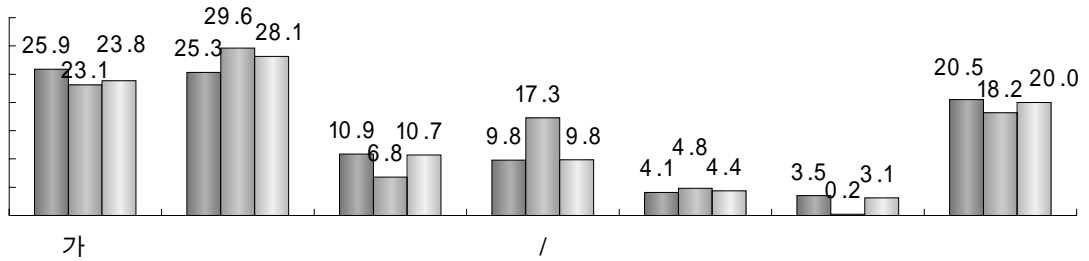
7. \_\_\_\_\_

●

□ 가 (25.3%) (25.9%),

< 48 >

( : %)



■ □ □

□ ( )

□ 37.4% , 34.1%

12.6% .

< 24 > ( )

( : %)

	<b>733,841</b>	<b>2.8</b>	<b>34.1</b>	<b>5.6</b>	<b>12.6</b>	<b>1.4</b>	<b>5.1</b>	<b>37.4</b>	<b>0.9</b>
	209,142	4.5	26.3	5.4	7.3	0.6	15.1	39.9	0.9
	319,916	8.6	17.1	1.5	52.4	2.4	4.8	11.0	2.1
	178,217	6.7	22.1	3.1	35.0	1.8	7.4	22.3	1.6

□

□

17.5% , 27.3%가

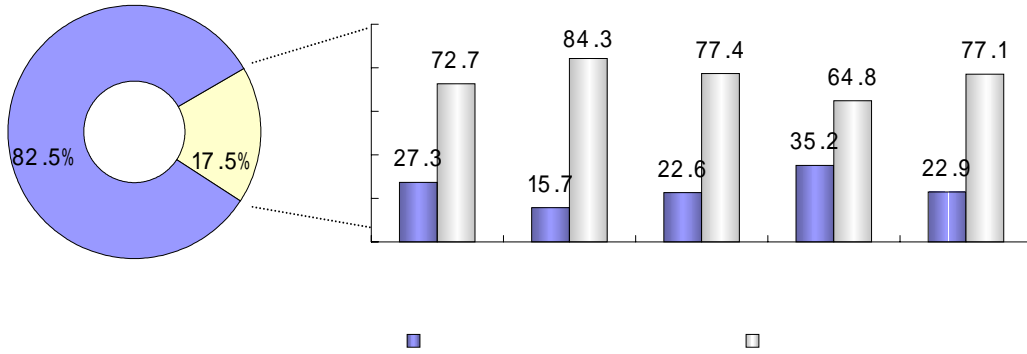
35.2%

가

< 49>

< 50>

( : %)



●

□

40.5% 가 ,

23.1% .

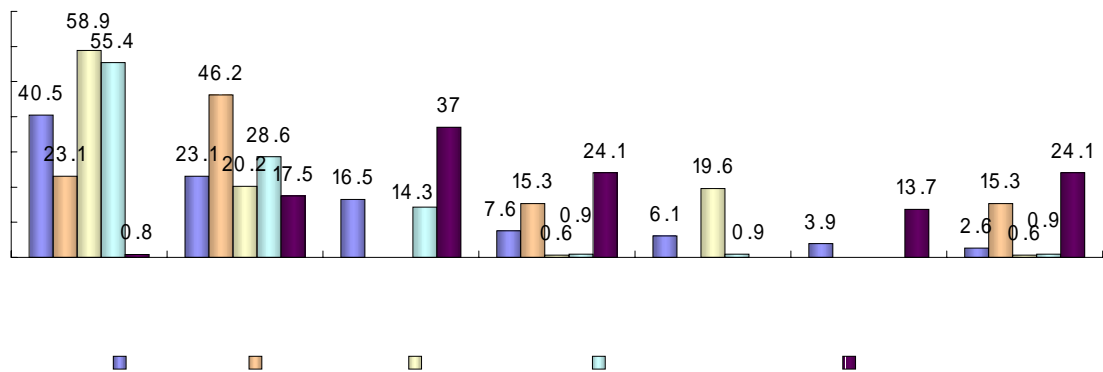
□

(46.2%) 가 .

< 51>

( )

( : %)



●

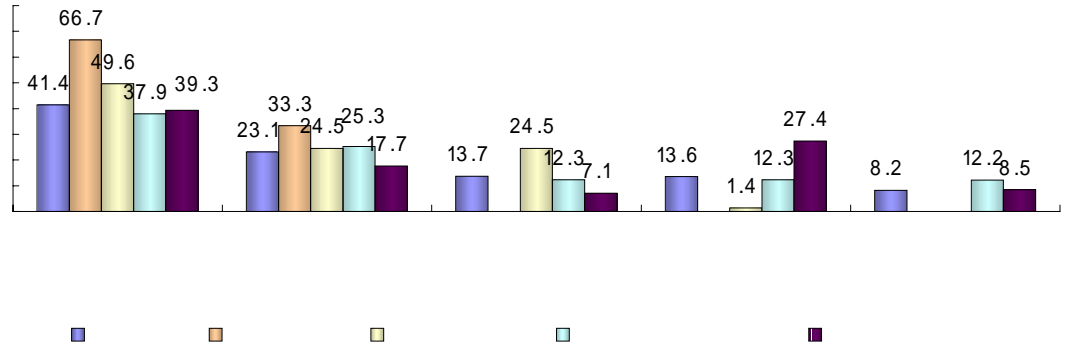
□

(41.4%),

(23.1%)

< 52 >

( : %)



●

□

(45.3%) 가

(13.2%),

(10.9%)

< 25 >

( )

( : %)

	710,127	45.3	13.2	10.9	9.2	4.8	4.5	3.7	9.5
	26,078	52.2	12.0	16.4	7.5	5.5	0.2	1.0	10.1
	204,439	48.6	14.0	14.3	5.7	0.9	5.4	4.0	7.2
	307,521	42.7	12.4	9.3	9.7	4.6	6.2	4.6	10.8
	172,088	44.9	13.6	8.6	12.7	9.5	1.1	2.3	10.2



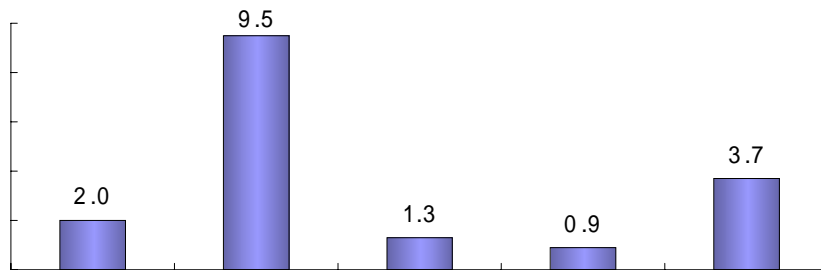
8.

● 가

□ 2.0%가 가 .

□ 가 가 9.5% , 3.7%,  
1.3%, 0.9% .

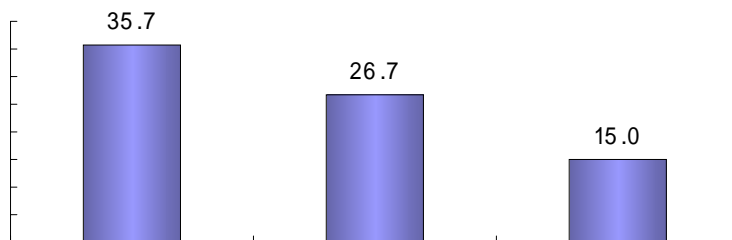
< 53 > 가 ( : %)



□

□ 가 (35.7%), (26.7%),  
(15.0%) .

< 54 > 가 ( : %)



9. \_\_\_\_\_

- 가  
64.1%가
- (47.8%) (44.3%) (58.3%)
- 34.9%, 31.9%
- (13.1%) (6.7%)

< 26 >

( : %)

	<b>950,506</b>	<b>64.1</b>	<b>47.8</b>	<b>13.1</b>	<b>18.3</b>	<b>44.3</b>
	39,968	63.4	47.0	21.3	29.7	57.8
	910,538	64.1	47.9	12.7	17.8	43.7

	<b>950,506</b>	<b>6.7</b>	<b>26.2</b>	<b>31.9</b>	<b>34.9</b>	<b>58.3</b>
	39,968	17.9	37.2	57.6	43.0	22.2
	910,538	6.1	25.7	30.8	34.6	59.9

10.

●

□ , 56.1% 가  
(29%) (14.9%) .

□ 가 (37%) ,  
(6%) 가 .

< 27 >

( : %)

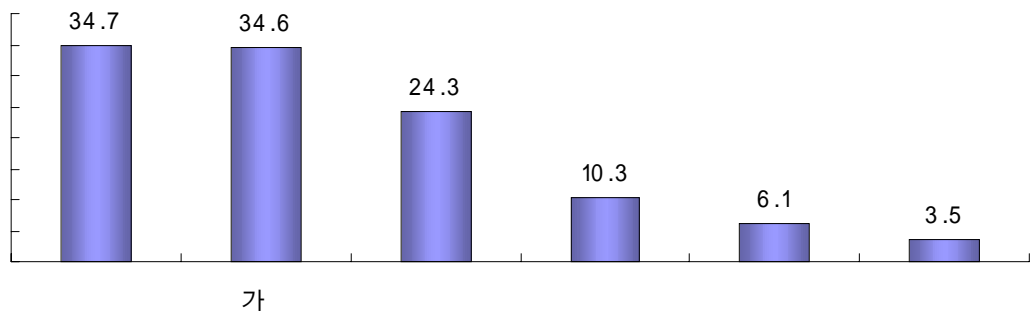
	<b>950,506</b>	<b>29.0</b>	<b>56.1</b>	<b>14.9</b>
	39,968	37.0	57.0	6.0
	305,364	28.1	55.3	16.6
	386,501	28.2	57.3	14.5
	218,673	30.3	54.7	15.0

□ (34.6%), (24.3%) 가 (34.7%) 가 .

< 55 >

( )

( : %)



□

□ 2

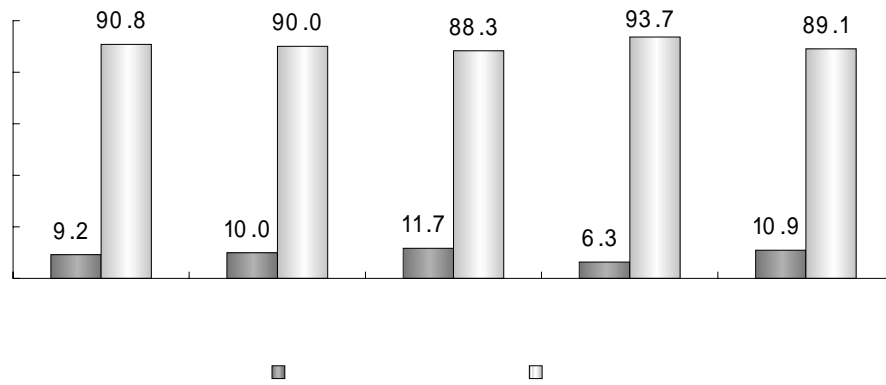
9.2%

□

(11.7%),

(6.3%).

< 56 >



□

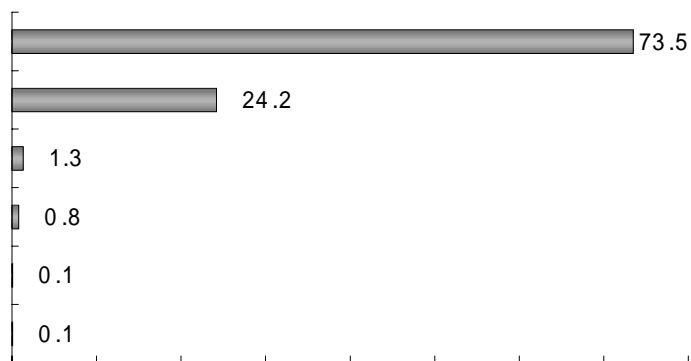
24.2%

(73.5%),

1.3%

< 57 >

( : %)



●

가

가

□ 74.9%

가

□ (95.7%)가 가

가

가

< 58> 가

< 59>

가

